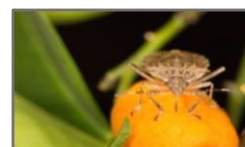


ENTOMOLOGY ELECTIVES

(Tentative Schedule 2022-2023)



COURSE NAME	FALL		WINTER		SPRING	
	INSECTEVOLUTION				ENTM106 (ODD YRS)	
BIOLOGY OF SOCIAL INSECTS			ENTM 108 ODD YRS	4		
FIELDENTMOLOGY					ENTM109 EVENYRS	4
MOLECULAR BIOLOGY & GENOMICS OF HUMAN DISEASE VECTOR			ENTM 111 ODD YRS	3		
SYSTEMATICS			ENTM/BIOL/ BPSC 112	4		
AQUATIC INSECTS					ENTM114 EVENYRS	4
PESTICIDES, BIOLOGICAL ORGANISMS & ENVIRONMENT	ENTM125 ODD YRS	3				
MEDICAL & VETERINARY ENTOMOLOGY			ENTM126	4		
INSECTECOLOGY			ENTM/BIOL 127	4		
INTROTOBIOLOGICAL CONTROL	ENTM129 EVENYRS	2				
INTROTOBIOLOGICAL CONTROL LAB	ENTM129L EVENYRS	2				
INVASION ECOLOGY	ENTM130 ODD YRS	4				
URBAN ENTOMOLOGY					ENTM133 ODD YRS	4
EVOLUTION OF CONFLICT & COOPERATION	ENTM/MCBL 139	4				
FORENSIC ENTOMOLOGY					ENTM154/L ODD YRS	5
INSECT BEHAVIOR	ENTM/BIOL 162	4				
FOUNDATIONS OF PLANT BIOLOGY	BPSC/BIOL 104	4				