

Geophysics Major

Bachelor of Science 4-year Plans
ARC 35 Placement

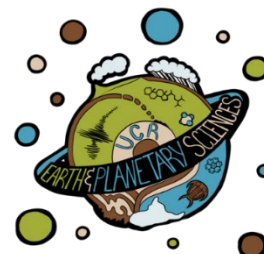


All sample plans do not include earned AP/IB/college units from an outside institution. Summer session is optional.

Students are still strongly encouraged to consult their academic advisor for a customized and detailed course plan

MATH Placement: ARC 35				
	FALL	WINTER	SPRING	YEARLY CHECKPOINTS
1st Year Total Units: 44	ARC 035 (0) GEO 001 (4) ENGL 001A (4) Breadth (4) 12 units	MATH 006A (4) ENGL 001B (4) Breadth (4) Breadth (4) 16 units	MATH 006B (4) GEO 004 (4)§ ENGL 001C (4) Breadth (4) 16 units	<ul style="list-style-type: none"> Join the Geology Student Organization (club) Attend department BBQs
2nd Year Total units: 47	MATH 009A (4) Breadth (4) Breadth (4) Elective (4) 16 units	MATH 009B (4) MATH 031 (5) PHYS 040A (5) 14 units	MATH 009C (4) MATH 046 (4) PHYS 040B (5) Breadth (4) 17 units	<ul style="list-style-type: none"> Consider UC Education Abroad Program Check out the UCR Undergraduate Research Symposium (May)
3rd Year Total Units: 42	PHYS 040C (5) GEO 115 (5)* GEO 145 (4) * GEO 150 (1) 15 units	MATH 010A (4) CS 010A (4) GEO 116 (5)* GEO 150 (1) 14 units	MATH 010B (4) GEO 140 (4)*! GEO 147 (4) §* GEO 150 (1) 13 units	<ul style="list-style-type: none"> Complete all MATH and PHYS lower-division requirements Consider applying (typically December) for a summer internship Consider GEO 190 Special Studies and/or working in a faculty's research group
4th Year Total Units: 47	GEO 111 (4)* GEO 1XX ELECT (4) GEO 191 (1) Breadth (4) 13 units	GEO 1XX ELECT (4) GEO 1XX ELECT (4) GEO 191 (1) Elective (4) Elective (4) 17 units	GEO 1XX ELECT (4) GEO 1XX ELECT (4) GEO 191 (1) Elective (4) Elective (4) 17 units	<ul style="list-style-type: none"> Consider GEO 195 Senior Thesis Consider graduate school (applications typically due December)

KEY
BOLD: required courses for GEPH major
 * requires prerequisite courses
 § choose from GEO 002 or GEO 008, GEO 144 or GEO 147
 ! GEO 140 offered every other year, confirm if you can complete in spring of 3rd or 4th year.



Contact Information:

For general UCR & CNAS advising please visit, www.cnasstudent.ucr.edu

For advice on Geophysics courses please contact Lead Faculty Advisor: Dr. Gareth Funning, gareth.funning@ucr.edu

Additional Geophysics Faculty available to answer major related questions: Dr. Sandra Kirtland Turner, sandra.kirtlandturner@ucr.edu, Dr. Maryjo Brounce, mbrounce@ucr.edu, Dr. Nicolas Barth, nic.barth@ucr.edu.

Geophysics Major

Bachelor of Science 4-year Plans
MATH 6A Placement

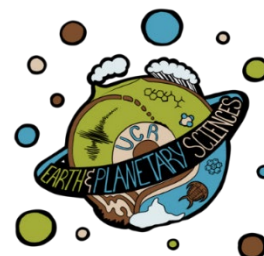


All sample plans do not include earned AP/IB/college units from an outside institution. Summer session is optional.

Students are still strongly encouraged to consult their academic advisor for a customized and detailed course plan

MATH Placement: MATH 6A				
	FALL	WINTER	SPRING	YEARLY CHECKPOINTS
1st Year Total Units: 48	MATH 006A (4) GEO 001 (4) ENGL 001A (4) Breadth (4) 16 units	MATH 006B (4) ENGL 001B (4) Breadth (4) Breadth (4) 16 units	MATH 009A (4) GEO 004 (4)§ ENGL 001C (4) Breadth (4) 16 units	<ul style="list-style-type: none"> Join the Geology Student Organization (club) Attend department BBQs
2nd Year Total units: 44	PHYS 040A (5) MATH 009B (4) MATH 031 (5) 14 units	PHYS 040B (5) MATH 009C (4) MATH 046 (4) 13 units	PHYS 040C (5) MATH 010A (4) Breadth (4) Breadth (4) 17 units	<ul style="list-style-type: none"> Consider UC Education Abroad Program Check out the UCR Undergraduate Research Symposium (May)
3rd Year Total Units: 41	GEO 115 (5)* GEO 145 (4) * MATH 010B (4) GEO 150 (1) 14 units	CS 010A (4) GEO 116 (5)* GEO 150 (1) Breadth (4) 14 units	GEO 140 (4)*! GEO 147 (4) §* GEO 150 (1) Breadth (4) 13 units	<ul style="list-style-type: none"> Complete all MATH and PHYS lower-division requirements Consider applying (typically December) for a summer internship Consider GEO 190 Special Studies and/or working in a faculty's research group
4th Year Total Units: 47	GEO 111 (4)* GEO 1XX ELECT (4) GEO 191 (1) Elective (4) 13 units	GEO 1XX ELECT (4) GEO 1XX ELECT (4) GEO 191 (1) Elective (4) Elective (4) 17 units	GEO 1XX ELECT (4) GEO 1XX ELECT (4) GEO 191 (1) Elective (4) Elective (4) 17 units	<ul style="list-style-type: none"> Consider GEO 195 Senior Thesis Consider graduate school (applications typically due December)

KEY
BOLD: required courses for GEPH major
 * requires prerequisite courses
 § choose from GEO 002 or GEO 008, GEO 144 or GEO 147
 ! GEO 140 offered every other year, confirm if you can complete in spring of 3rd or 4th year.



Contact Information:

For general UCR & CNAS advising please visit, www.cnasstudent.ucr.edu

For advice on Geophysics courses please contact Lead Faculty Advisor: Dr. Gareth Funning, gareth.funning@ucr.edu

Additional Geophysics Faculty available to answer major related questions: Dr. Sandra Kirtland Turner, sandra.kirtlandturner@ucr.edu, Dr. Maryjo Brounce, mbrounce@ucr.edu, Dr. Nicolas Barth, nic.barth@ucr.edu.

Geophysics Major

Bachelor of Science 4-year Plans
MATH 5A Placement

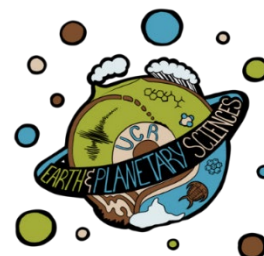


All sample plans do not include earned AP/IB/college units from an outside institution. Summer session is optional.

Students are still strongly encouraged to consult their academic advisor for a customized and detailed course plan

MATH Placement: 5A				
	FALL	WINTER	SPRING	YEARLY CHECKPOINTS
1st Year Total Units: 45	MATH 005A (5) GEO 001 (4) ENGL 001A (4) 13 units	MATH 009A (4) ENGL 001B (4) Breadth (4) Breadth (4) 16 units	MATH 009B (4) GEO 004 (4)§ ENGL 001C (4) Breadth (4) 16 units	<ul style="list-style-type: none"> ● Join the Geology Student Organization (club) ● Attend department BBQs
2nd Year Total units: 44	PHYS 040A (5) MATH 009B (4) MATH 031 (5) 14 units	PHYS 040B (5) MATH 009C (4) MATH 046 (4) 13 units	PHYS 040C (5) MATH 010A (4) Breadth (4) Breadth (4) 17 units	<ul style="list-style-type: none"> ● Consider UC Education Abroad Program ● Check out the UCR Undergraduate Research Symposium (May)
3rd Year Total Units: 46	MATH 010B (4) GEO 115 (5)* GEO 145 (4) * GEO 150 (1) 14 units	CS 010A (4) GEO 116 (5)* GEO 150 (1) Breadth (4) 14 units	GEO 140 (4)*! GEO 147 (4) §* GEO 150 (1) Breadth (4) Elective (4) 17 units	<ul style="list-style-type: none"> ● Complete all MATH and PHYS lower-division requirements ● Consider applying (typically December) for a summer internship ● Consider GEO 190 Special Studies and/or working in a faculty's research group
4th Year Total Units: 47	GEO 111 (4)* GEO 1XX ELECT (4) GEO 191 (1) Breadth (4) 17 units	GEO 1XX ELECT (4) GEO 1XX ELECT (4) GEO 191 (1) Elective (4) Elective (4) 17 units	GEO 1XX ELECT (4) GEO 1XX ELECT (4) GEO 191 (1) Elective (4) Elective (4) 17 units	<ul style="list-style-type: none"> ● Consider GEO 195 Senior Thesis ● Consider graduate school (applications typically due December)

KEY
BOLD: required courses for GEPH major
 * requires prerequisite courses
 § choose from GEO 002 or GEO 008, GEO 144 or GEO 147
 ! GEO 140 offered every other year, confirm if you can complete in spring of 3rd or 4th year.



Contact Information:

For general UCR & CNAS advising please visit, www.cnasstudent.ucr.edu

For advice on Geophysics courses please contact Lead Faculty Advisor: Dr. Gareth Funning, gareth.funning@ucr.edu

Additional Geophysics Faculty available to answer major related questions: Dr. Sandra Kirtland Turner, sandra.kirtlandturner@ucr.edu, Dr. Maryjo Brounce, mbrounce@ucr.edu, Dr. Nicolas Barth, nic.barth@ucr.edu.

Geophysics Major

Bachelor of Science 4-year Plans
MATH 9A Placement

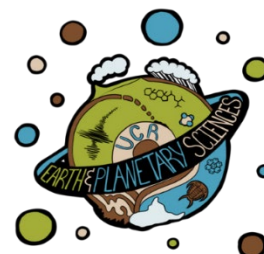


All sample plans do not include earned AP/IB/college units from an outside institution. Summer session is optional.

Students are still strongly encouraged to consult their academic advisor for a customized and detailed course plan

MATH Placement: MATH 9A				
	FALL	WINTER	SPRING	YEARLY CHECKPOINTS
1st Year Total Units: 41	MATH 009A (4) GEO 001 (4) ENGL 001A (4) 12 units	MATH 009B (4) MATH 031 (5) ENGL 001B (4) 13 units	MATH 009C (4) GEO 004 (4)§ ENGL 001C (4) Breadth (4) 16 units	<ul style="list-style-type: none"> Join the Geology Student Organization (club) Attend department BBQs
2nd Year Total units: 47	PHYS 040A (5) MATH 046 (4) Breadth (4) Breadth (4) 17 units	PHYS 040B (5) MATH 010A (4) Breadth (4) 13 units	PHYS 040C (5) MATH 010B (4) Breadth (4) Breadth (4) 17 units	<ul style="list-style-type: none"> Consider UC Education Abroad Program Check out the UCR Undergraduate Research Symposium (May)
3rd Year Total Units: 45	GEO 115 (5)* GEO 145 (4) * GEO 150 (1) Breadth (4) 14 units	CS 010A (4) GEO 116 (5)* GEO 150 (1) Elective (4) Elective (4) 17 units	GEO 140 (4)*! GEO 147 (4) §* GEO 150 (1) Elective (4) 14 units	<ul style="list-style-type: none"> Complete all MATH and PHYS lower-division requirements Consider applying (typically December) for a summer internship Consider GEO 190 Special Studies and/or working in a faculty's research group
4th Year Total Units: 47	GEO 111 (4)* GEO 1XX ELECT (4) GEO 191 (1) Breadth (4) 13 units	GEO 1XX ELECT (4) GEO 1XX ELECT (4) GEO 191 (1) Elective (4) Elective (4) 17 units	GEO 1XX ELECT (4) GEO 1XX ELECT (4) GEO 191 (1) Elective (4) Elective (4) 17 units	<ul style="list-style-type: none"> Consider GEO 195 Senior Thesis Consider graduate school (applications typically due December)

KEY
BOLD: required courses for GEPH major
 * requires prerequisite courses
 § choose from GEO 002 or GEO 008, GEO 144 or GEO 147
 ! GEO 140 offered every other year, confirm if you can complete in spring of 3rd or 4th year.



Contact Information:

For general UCR & CNAS advising please visit, www.cnasstudent.ucr.edu

For advice on Geophysics courses please contact Lead Faculty Advisor: Dr. Gareth Funning, gareth.funning@ucr.edu

Additional Geophysics Faculty available to answer major related questions: Dr. Sandra Kirtland Turner, sandra.kirtlandturner@ucr.edu, Dr. Maryjo Brounce, mbrounce@ucr.edu, Dr. Nicolas Barth, nic.barth@ucr.edu.