

Geology Major

Bachelor of Science 4-year Plans
ARC 35 Placement



All sample plans do not include earned AP/IB/college units from an outside institution. Summer session is optional.

Students are still strongly encouraged to consult their academic advisor for a customized and detailed course plan

MATH Placement: ARC 35				
	FALL	WINTER	SPRING	YEARLY CHECKPOINTS
1st Year Total Units: 48	ARC 035 (0) GEO 001 (4) ENGL 001A (4) Breadth (4) Elective (4) 16 units	MATH 006A (4) GEO 002 (4)§ ENGL 001B (4) Breadth (4) 16 units	MATH 006B (4) GEO 003 (4) ENGL 001C (4) Breadth (4) 16 units	<ul style="list-style-type: none"> Join the Geology Student Organization (club) Attend department BBQs
2nd Year Total units: 44	MATH 009A (4) CHEM 001A (4) CHEM 01LA (1) Breadth (4) 13 units	MATH 009B (4) CHEM 001B (4) CHEM 01LB (1) BIOL 5A (4) BIOL 5LA (1) 14 units	PHYS 002A (4) PHYS 02LA (1) MATH 046 (4) Breadth (4) Elective (4) 17 units	<ul style="list-style-type: none"> Complete all CHEM lower-division requirements Consider UC Education Abroad Program Check out the UCR Undergraduate Research Symposium (May)
3rd Year Total Units: 43	PHYS 002B (4) PHYS 02LB (1) GEO 115 (5)* GEO 122 (5)* GEO 150 (1) 16 units	GEO 100 (5)* GEO 101A (3)* GEO 116 (5)* GEO 150 (1) 14 units	GEO 101B (3)* GEO 118 (5)* GEO 150 (1) Elective (4) 13 units	<ul style="list-style-type: none"> Complete all MATH, PHYS, and BIOL lower-division requirements Consider applying (typically December) for a summer internship Consider GEO 190 Special Studies and/or working in a faculty's research group
4th Year Total Units: 52	GEO 111 (4)* GEO 1XX ELECT (4) GEO 191 (1) Breadth (4) Elective (4) 17 units	GEO 1XX ELECT (4) GEO 191 (1) Breadth (4) Elective (4) 13 units	GEO 102A-B (9)*‡ GEO 191 (1) Elective (4) Elective (4) 18 units	<ul style="list-style-type: none"> Consider GEO 195 Senior Thesis Consider graduate school (applications typically due December) Consider the Geologist-In-Training exam if pursuing CA PG licensure

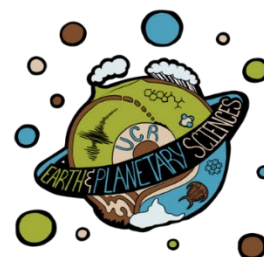
KEY

BOLD: required courses for GEOL major

* requires prerequisite courses

§ Choose from GEO 002, GEO 009, or GEO 011

‡ takes place the following Summer



Contact Information:

For general UCR & CNAS advising please visit, www.cnasstudent.ucr.edu

For advice on Geology courses please contact Lead Faculty Advisor: Dr. Gareth Funning, gareth.funning@ucr.edu

Additional Geology Faculty available to answer major related questions: Dr. Sandra Kirtland Turner,

sandra.kirtlandturner@ucr.edu, Dr. Maryjo Brounce, mbrounce@ucr.edu, Dr. Nicolas Barth, nic.barth@ucr.edu.

Geology Major

Bachelor of Science 4-year Plans
MATH 6A Placement



All sample plans do not include earned AP/IB/college units from an outside institution. Summer session is optional.

Students are still strongly encouraged to consult their academic advisor for a customized and detailed course plan

MATH Placement: MATH 6A				
	FALL	WINTER	SPRING	YEARLY CHECKPOINTS
1st Year Total Units: 46	MATH 006A (4) GEO 001 (4) ENGL 001A (4) Breadth (4) 16 units	MATH 006B (4) CHEM 001A (4) CHEM 011A (1) ENGL 001B (4) 13 units	MATH 009A (4) CHEM 001B (4) CHEM 011B (1) GEO 003 (4) Breadth (4) 17 units	<ul style="list-style-type: none"> • Complete all CHEM lower-division requirements • Join the Geology Student Organization (club) • Attend department BBQs
2nd Year Total units: 51	MATH 009B (4) PHYS 002A (4) PHYS 021A (1) Breadth (4) Elective (4) 17 units	GEO 002 (4)§ PHYS 002B (4) PHYS 021B (1) Breadth (4) Elective (4) 17 units	BIOL 5A (4) BIOL 51A (1) MATH 046 (4) ENGL 001C (4) Breadth (4) 17 units	<ul style="list-style-type: none"> • Complete all MATH, PHYS, and BIOL lower-division requirements • Consider UC Education Abroad Program • Check out the UCR Undergraduate Research Symposium (May)
3rd Year Total Units: 42	GEO 115 (5)* GEO 122 (5)* GEO 150 (1) Elective (4) 15 units	GEO 100 (5)* GEO 101A (3)* GEO 116 (5)* GEO 150 (1) 14 units	GEO 101B (3)* GEO 118 (5)* GEO 150 (1) Elective (4) 13 units	<ul style="list-style-type: none"> • Consider applying (typically December) for a summer internship • Consider GEO 190 Special Studies and/or working in a faculty's research group
4th Year Total Units: 48	GEO 111 (4)* GEO 191 (1) Breadth (4) Elective (4) 13 units	GEO 1XX ELECT (4) GEO 191 (1) Breadth (4) Elective (4) Elective (4) 17 units	GEO 102A-B (9)*‡ GEO 1XX ELECT (4) GEO 191 (1) Elective (4) 18 units	<ul style="list-style-type: none"> • Consider GEO 195 Senior Thesis • Consider graduate school (applications typically due December) • Consider the Geologist-In-Training exam if pursuing CA PG licensure

KEY

BOLD: required courses for GEOL major

* requires prerequisite courses

§ Choose from GEO 002, GEO 009, or GEO 011

‡ takes place the following Summer



Contact Information:

For general UCR & CNAS advising please visit, www.cnasstudent.ucr.edu

For advice on Geology courses please contact Lead Faculty Advisor: Dr. Gareth Funning, gareth.funning@ucr.edu

Additional Geology Faculty available to answer major related questions: Dr. Sandra Kirtland Turner,

sandra.kirtlandturner@ucr.edu, Dr. Maryjo Brounce, mbrounce@ucr.edu, Dr. Nicolas Barth, nic.barth@ucr.edu.

Geology Major

Bachelor of Science 4-year Plans
MATH 5A Placement



All sample plans do not include earned AP/IB/college units from an outside institution. Summer session is optional.

Students are still strongly encouraged to consult their academic advisor for a customized and detailed course plan

MATH Placement: MATH 5A				
	FALL	WINTER	SPRING	YEARLY CHECKPOINTS
1st Year Total Units: 47	MATH 005A (5) GEO 001 (4) ENGL 001A (4) Breadth (4) 17 units	MATH 009A (4) CHEM 001A (4) CHEM 011A (1) ENGL 001B (4) 13 units	MATH 009B (4) CHEM 001B (4) CHEM 011B (1) GEO 003 (4) Breadth (4) 17 units	<ul style="list-style-type: none"> ● Complete all CHEM lower-division requirements ● Join the Geology Student Organization (club) ● Attend department BBQs
2nd Year Total units: 47	MATH 046 (4) PHYS 002A (4) PHYS 021A (1) Breadth (4) 13 units	GEO 002 (4)§ PHYS 002B (4) PHYS 021B (1) Breadth (4) Breadth (4) 17 units	BIOL 5A (4) BIOL 51A (1) ENGL 001C (4) Breadth (4) Elective (4) 17 units	<ul style="list-style-type: none"> ● Complete all MATH, PHYS, and BIOL lower-division requirements ● Consider UC Education Abroad Program ● Check out the UCR Undergraduate Research Symposium (May)
3rd Year Total Units: 42	GEO 115 (5)* GEO 122 (5)* GEO 150 (1) Elective (4) 15 units	GEO 100 (5)* GEO 101A (3)* GEO 116 (5)* GEO 150 (1) 14 units	GEO 101B (3)* GEO 118 (5)* GEO 150 (1) Elective (4) 13 units	<ul style="list-style-type: none"> ● Consider applying (typically December) for a summer internship ● Consider GEO 190 Special Studies and/or working in a faculty's research group
4th Year Total Units: 44	GEO 111 (4)* GEO 191 (1) Breadth (4) Elective (4) 13 units	GEO 1XX ELECT (4) GEO 191 (1) Breadth (4) Elective (4) 13 units	GEO 102A-B (9)*‡ GEO 1XX ELECT (4) GEO 191 (1) Elective (4) 18 units	<ul style="list-style-type: none"> ● Consider GEO 195 Senior Thesis ● Consider graduate school (applications typically due December) ● Consider the Geologist-In-Training exam if pursuing CA PG licensure

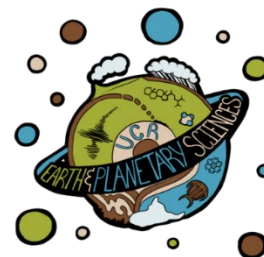
KEY

BOLD: required courses for GEOL major

* requires prerequisite courses

§ Choose from GEO 002, GEO 009, or GEO 011

‡ takes place the following Summer



Contact Information:

For general UCR & CNAS advising please visit, www.cnasstudent.ucr.edu

For advice on Geology courses please contact Lead Faculty Advisor: Dr. Gareth Funning, gareth.funning@ucr.edu

Additional Geology Faculty available to answer major related questions: Dr. Sandra Kirtland Turner,

sandra.kirtlandturner@ucr.edu, Dr. Maryjo Brounce, mbrounce@ucr.edu, Dr. Nicolas Barth, nic.barth@ucr.edu.

Geology Major

Bachelor of Science 4-year Plans
MATH 9A Placement

All sample plans do not include earned AP/IB/college units from an outside institution. Summer session is optional.

Students are still strongly encouraged to consult their academic advisor for a customized and detailed course plan

MATH Placement: MATH 9A				
	FALL	WINTER	SPRING	YEARLY CHECKPOINTS
1st Year Total Units: 42	MATH 009A (4) CHEM 001A (4) CHEM 011A (1) GEO 001 (4) 13 units	MATH 009B (4) CHEM 001B (4) CHEM 011B (1) ENGL 001A (4) 13 units	GEO 003 (4) ENGL 001B (4) Breadth (4) Breadth (4) 16 units	<ul style="list-style-type: none"> • Complete all CHEM lower-division requirements • Join the Geology Student Organization (club) • Attend department BBQs
2nd Year Total units: 51	MATH 046 (4) PHYS 002A (4) PHYS 021A (1) Breadth (4) Elective (4) 17 units	GEO 002 (4)§ PHYS 002B (4) PHYS 021B (1) Breadth (4) Breadth (4) 17 units	BIOL 5A (4) BIOL 51A (1) ENGL 001C (4) Breadth (4) Elective (4) 17 units	<ul style="list-style-type: none"> • Complete all MATH, PHYS, and BIOL lower-division requirements • Consider UC Education Abroad Program • Check out the UCR Undergraduate Research Symposium (May)
3rd Year Total Units: 42	GEO 115 (5)* GEO 122 (5)* GEO 150 (1) Elective (4) 15 units	GEO 100 (5)* GEO 101A (3)* GEO 116 (5)* GEO 150 (1) 14 units	GEO 101B (3)* GEO 118 (5)* GEO 150 (1) Elective (4) 13 units	<ul style="list-style-type: none"> • Consider applying (typically December) for a summer internship • Consider GEO 190 Special Studies and/or working in a faculty's research group
4th Year Total Units: 48	GEO 111 (4)* GEO 191 (1) Breadth (4) Elective (4) 13 units	GEO 1XX ELECT (4) GEO 191 (1) Breadth (4) Elective (4) Elective (4) 17 units	GEO 102A-B (9)*‡ GEO 1XX ELECT (4) GEO 191 (1) Elective (4) 18 units	<ul style="list-style-type: none"> • Consider GEO 195 Senior Thesis • Consider graduate school (applications typically due December) • Consider the Geologist-In-Training exam if pursuing CA PG licensure

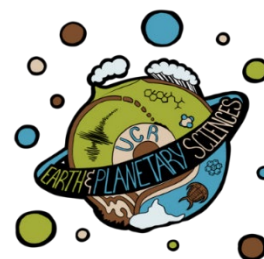
KEY

BOLD: required courses for GEOL major

* requires prerequisite courses

§ Choose from GEO 002, GEO 009, or GEO 011

‡ takes place the following Summer



Contact Information:

For general UCR & CNAS advising please visit, www.cnasstudent.ucr.edu

For advice on Geology courses please contact Lead Faculty Advisor: Dr. Gareth Funning, gareth.funning@ucr.edu

Additional Geology Faculty available to answer major related questions: Dr. Sandra Kirtland Turner,

sandra.kirtlandturner@ucr.edu, Dr. Maryjo Brounce, mbrounce@ucr.edu, Dr. Nicolas Barth, nic.barth@ucr.edu.